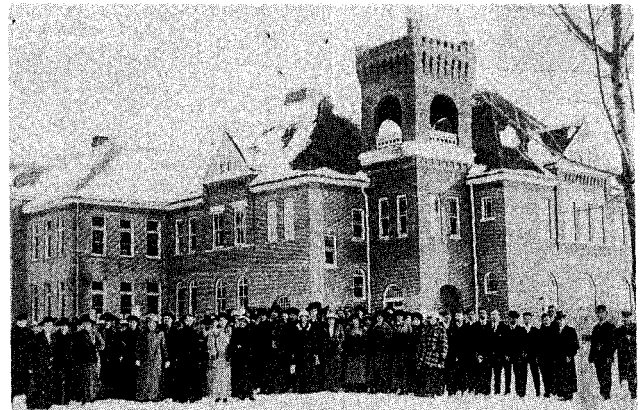


GANG MILL in Waters prepared logs to be cut and shipped to various lumber yards. The photo was taken in 1905.



LOVELY BELLES of an earlier day — Beulah Chase (l) and Bee Wyman.

A **TEACHERS INSTITUTE** crowd in front of the Old High School, on a wintry day. Evidently the men were more warm-blooded than the ladies. In all probability, the long coats covered long skirts, long stockings and long underwear!



THE LUMBER TRAIN loaded with logs gets ready to pull out for the mills in 1905 from the Stevens Lumber Company.