

built and operated by Mr. Bennett. Later Henry Lord operated the mill from 1902 to 1910. A work day was nine hours and about fourteen men were employed.

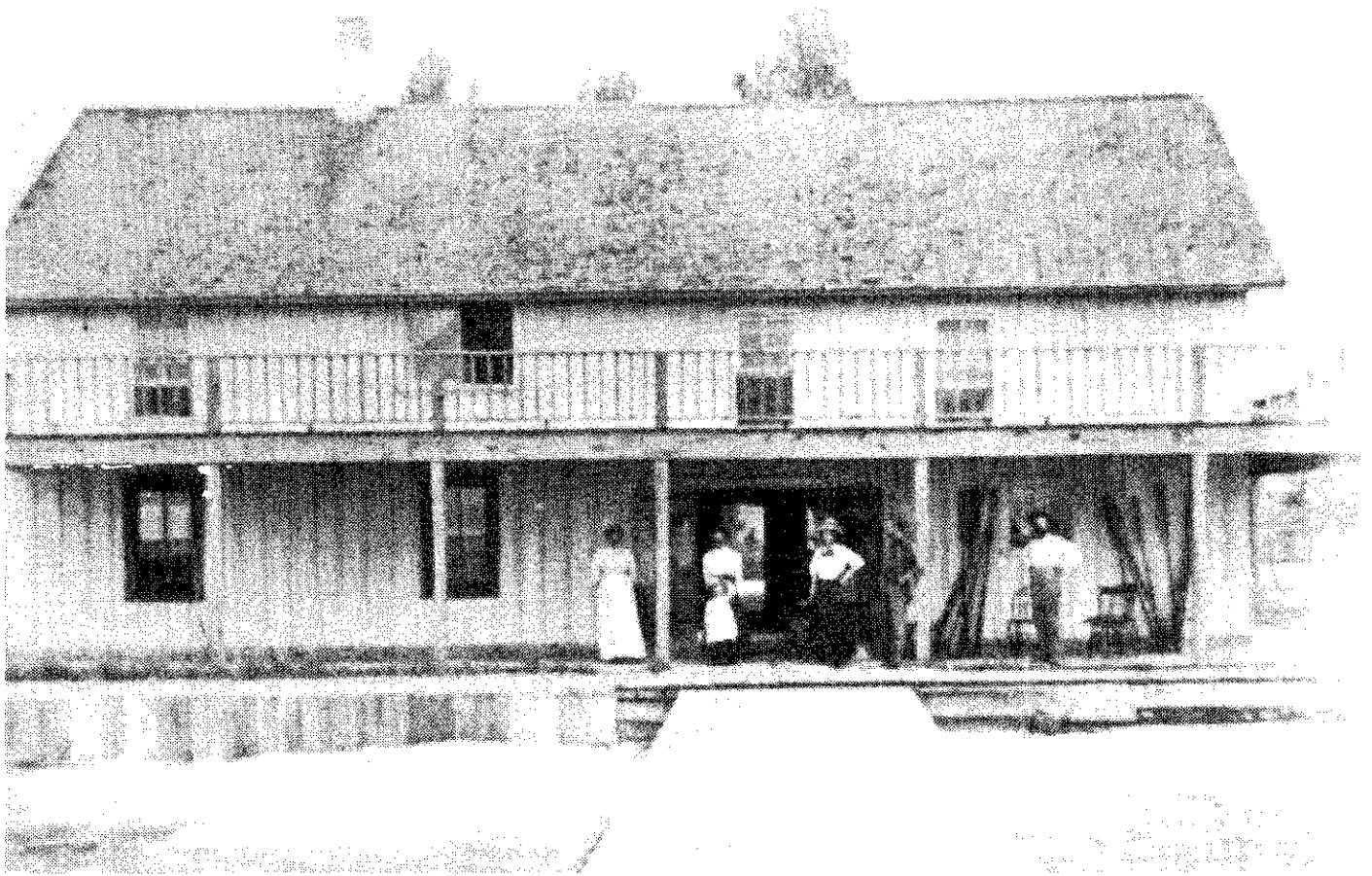
Religious services were held at the Schreur Camps with Elder Dirk and Allen Schreur in charge and Mrs. Grace Schreur as Sunday School teacher. School was held six months of the year at a school house near Cregoville.

Salling was located opposite the Wah Wah Soo entrance north to Alba Road. The town was peopled with Irish, Scots, Danish, Polish, Dutch and French Canadians. The school house was located on the corner of what is now Old 27 and West Otsego Lake Road. As the town grew the building was not large enough and a

second school was built in 1901 to take care of the overflow.

A sawmill for white pine stood where Geiglers Cottages were later built. As time went on, the saw dust pile washed into the north end of Otsego Lake which accounts for the spongy, black lake bottom there.

Across the lake were a number of camps and logs were hauled on big sleighs across the ice to the mill. Mr. Jensen built a log planing mill and Mr. Boyer's sawmill was south of Mr. Jensen's lumber yard. The timber must have been cut rather quickly for by 1914 c. 1915 these mills were moved to other locations and Salling, like so many other settlements, ceased to be.



Quick's Boat House at Oak Grove at the south end of Salling, taken about 1910.