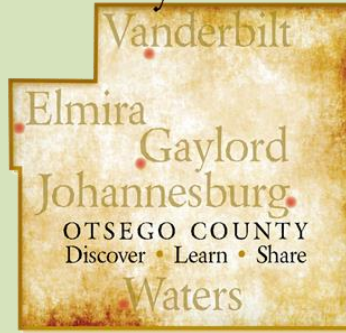


History Matters



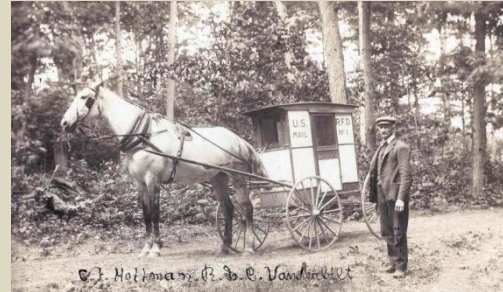
Update # 41

October 13, 2018

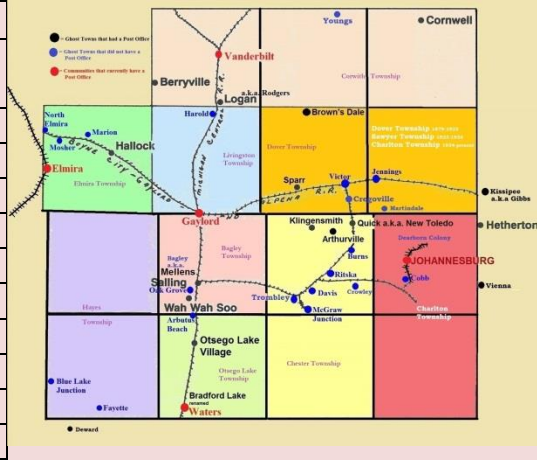
Phil Alexander
History Matters Detective

Did you know that 20 post offices operated in Otsego County throughout our nearly 150 year history? The list and map below show the location and years of operation. Notice the post office in Waters and also Otsego Lake Village closed and then re-opened. This was due to drastic shifts in population during the boom and bust lumbering era. Currently, five post offices serve Otsego County.

Rural Free Delivery (R.F.D.) started in the early 1900s and was a major benefit to the farm families. Vanderbilt R.F.D. postman with his horse is shown in photo.



Post Office	Est.	Closed
Otsego Lake Village	1873	1917
	1922	1956
Gaylord	1874	Open
Bradford Lake	1875	Waters
Elmira	1877	Open
Berryville	1878	1907
Brown's Dale	1879	1882
Logan	1880	1883
Mellens	1880	1883
Vanderbilt	1880	Open
Heatherton	1885	1903
Klingensmith	1885	1900



Post Office	Est.	Closed
Waters	1885	1922
	1923	1926
	1930	Open
Arthurville	1898	1898
Quick	1899	1920
Salling	1899	1912
Johannesburg	1901	Open
Cornwell	1905	?
Hallock	1906	1914
Wah Wah Soo	1913	1926
Sparr	1915	1932

Discover ♦ Learn ♦ Share

This photo shows Gaylord's 2nd Post Office shortly after opening in 1914. It was built by Claude Shannon, Sr. using local field stones and is located on the southeast corner of Main and Court.

Learn more Post Office history in David Ellis's book "Michigan Postal History: Post Offices 1805-1986. An excellent on-line resource is the US Postal Bulletin - [Link](#)



Discover ♦ Learn ♦ Share

Post Offices were the hub of social networking. They connected us with the outside world as well as provided a place to see fellow residents when picking up their mail. Much has changed with email and Facebook.

The Post Office was also an important employer for many people in our county. Much has been written about Miss Towle, the longtime Postmaster (or is it Mistress?) of early Gaylord. Members of the Welch family served many years in Johannesburg as did the Cremeans in Elmira and the Schottes in Waters. It was a labor intensive operation to be open 6 days, selling stamps, sorting & delivering mail, and many other services.

Help us collect and preserve this important part of our history. **Share** your photos like the one shown here and record your memories of our local post offices and the people who worked there. Their history matters.



Gaylord Post Office Employees c. 1983