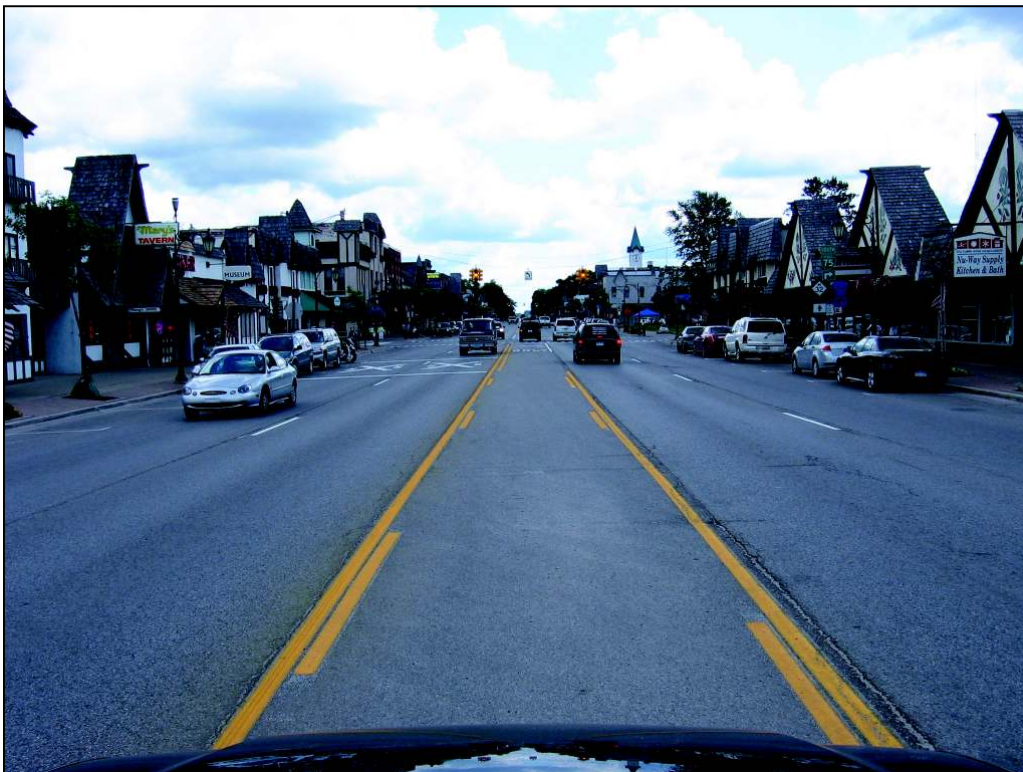


M-32 Downtown Pedestrian Safety and Streetscape Project Area



View looking east on Main Street towards rail road crossing and start of project area. The first project segment is located at the railroad crossing (snowmobile trail crossing safety improvements)

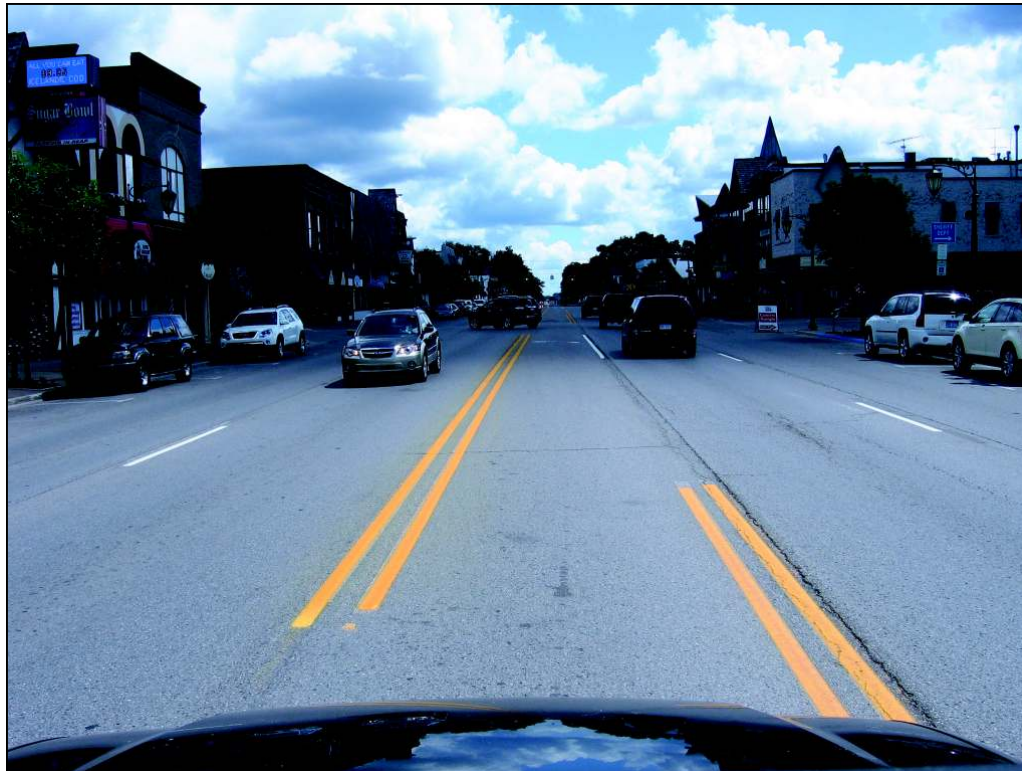


View looking east on Main Street from east side of Rail Road Tracks towards the Otsego Avenue intersection.

M-32 Downtown Pedestrian Safety and Streetscape Project Area

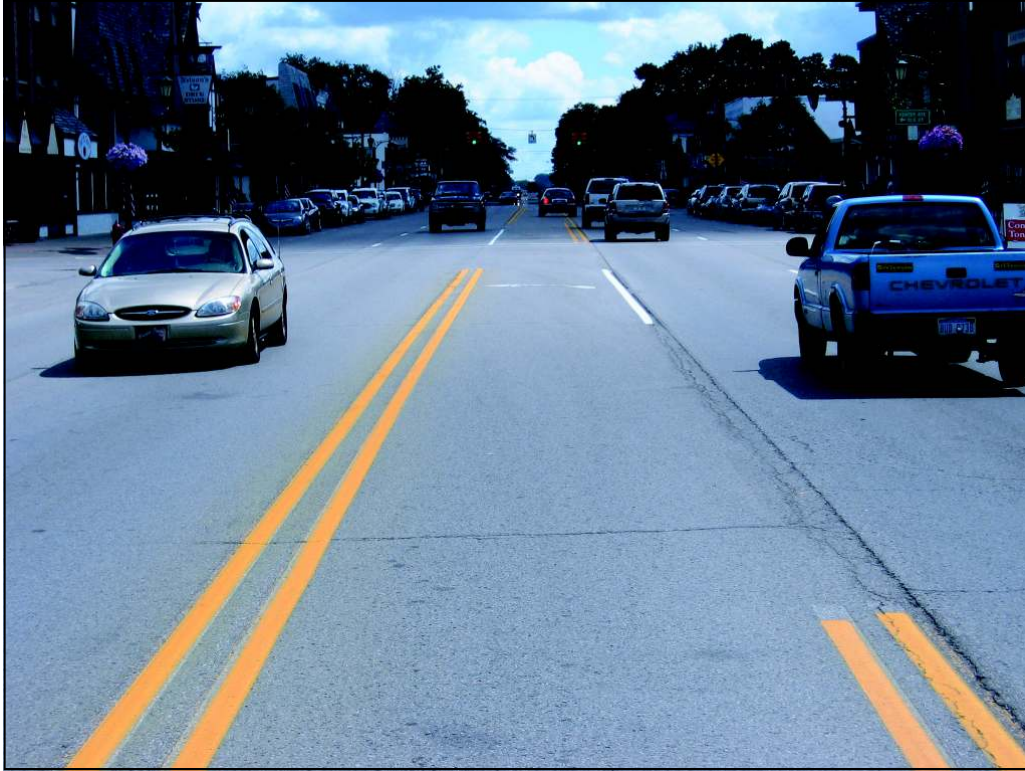


View looking east on Main Street from just west of the Otsego Avenue intersection



View looking east on Main Street from just east of the Otsego Avenue intersection.

M-32 Downtown Pedestrian Safety and Streetscape Project Area



View looking east on Main Street from just west of the Court Street intersection. The start of the second project segment begins here.



View looking east on Main Street from the Court Street intersection.

M-32 Downtown Pedestrian Safety and Streetscape Project Area

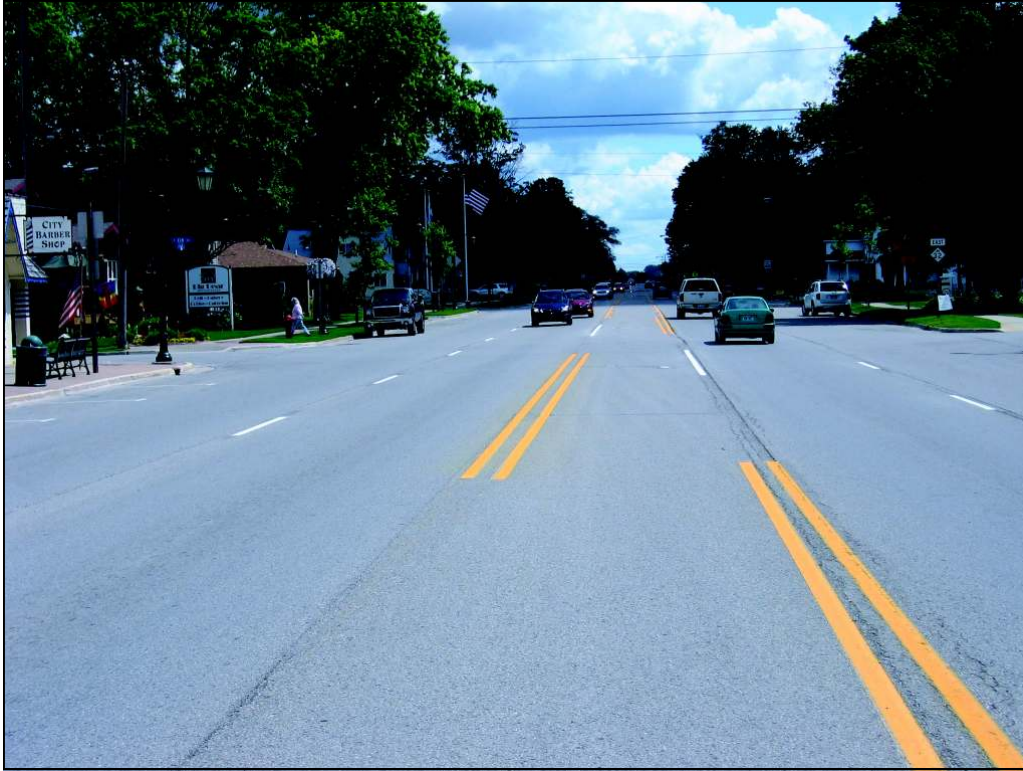


View looking east on Main Street from just east of the Court Street intersection and looking toward the Center Street intersection. The second project segment ends at approximately the back of the pickup truck in the center turn lane.



View looking east on Main Street from just east of the Center Street intersection.

M-32 Downtown Pedestrian Safety and Streetscape Project Area



View looking east on Main Street from just west of the Elm Avenue intersection. The third project segment begins in this location on right side of photo.



View looking east on Main Street from just east of the Elm Avenue intersection and looking towards the Oak Avenue intersection.

M-32 Downtown Pedestrian Safety and Streetscape Project Area



View looking east on Main Street from just east of the Oak Street intersection.



View looking east on Main Street towards the Hazel Avenue intersection.

M-32 Downtown Pedestrian Safety and Streetscape Project Area



View looking east on Main Street about mid way between Hazel and Maple Avenues.



View looking east on Main Street from just west of the Maple Avenue intersection. End of third project segment project area is noted on photo.