



NEWSLETTER

SPECIAL POINTS OF INTEREST:

- Welcome to New Members *Class of 2011*

Terri Cwik
Pam Greve
Sally Hall
Janet Woityra

- *Pause for a Cause*
- *Planting Day and Soil Tests*
- *Divide your Perennials for the Plant Exchange*
- *National Garden Week (June 5 - 11)*
Visit our Showcase at the Otsego County Library - Ruth Doss, Chair

INSIDE THIS ISSUE:

Luncheon May 11th	2
2011 Garden Walk	4
View My Garden	4
Upcycling	5
Year in Review	8
Calendar	9
2011 Herb of the Year	10

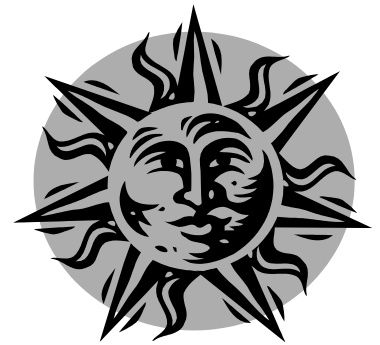
Guardian Gals, Inc.

"Kindness Rocks"

Pause for a Cause

Edelweiss Garden Club, Inc. will be the Presenters at the 79th consecutive week of "Pause for a Cause", May 3rd. This weekly Tuesday morning 8:30 a.m. gathering is held at Isabella's Copper Pot on North Otsego Avenue and hosted by the Guardian Gals, Inc. Our Members are invited to attend as we share our philanthropy of our 501c3 organization with the public. Member Cynthia Hilling made the connection with Guardian Gals, Inc. Executive Director

Abbigail Hamilton who was well received at our April Business Meeting. The intent is a one year partnership in which the gals ranging from 6th-8th grade and their Elders 9th-12th grade will help in our Sportsplex Energy Gardens. In return for their assistance, we will lend a hand to design, build and grow a garden at their new "International Headquarters" located in downtown Gaylord. A one of a kind program since 2004, their Mission: *To actively engage, educate and offer opportunities for young girls and women to learn the skills, behaviors and knowledge*



that are necessary for serving as catalysts for the creation of positive societal change. Through mentoring by local leaders, Guardian Gals, Inc. members are educated and empowered to take voluntary philanthropic and civic action for the common good of family, friends, local and global communities. More info: www.guardiangals.com

Plant and Party!

Picnic at the Opal Lake Beach House June 1st

The Michaywé Manager, Todd Chwatun, has contacted Member, Nancy Valuet and invited us to use the Opal Lake Beach House on Planting Day, June 1st as a *thank you for our Community Service* in Otsego County. See our Garden Planting schedule on Page 2, plant and then, join forces at

the Opal Lake Beach House for a potluck and picnic. Doors will be open at 9:00 a.m. Visit with other Members as we rev up our Summer season. (The Opal Lake Beach House is located just south of the corner of the Opal Lake Road and Michaywé Drive intersection.) Dress accordingly, as the loca-

tion is lakeside! Members with last names *A-M (Bring Salads)* and *N-Z (Bring Dessert)*. If you have an oil cloth, please bring it to adorn our tables! Napkins, plastic silverware, plates and beverages will be provided by the Committee. See your Yearbook for "Planting Check List."

Twelve Artists to Exhibit at May Luncheon

Members are encouraged to arrive at 11 a.m., Wednesday, May 11th and stroll the "Art of Gardening". Some of our very own Members will be displaying their works along with invited Artists from Gaylord Area Council for the Arts (GACA). See how our northern Michi-



gan inspires art from the natural beauty which surrounds us as well as through tailored floral gardens.

Some surprises await! Irene McCutchen and Paulie McCoy, Chairs have a Committee with very creative ideas to make this the most enchanting day!

You will be able to purchase Art from the Exhibit along with Garden Art and flowers. The seating is limited and nearly filled to capacity at 80! More details can be found in the previous Newsletter.

The Membership Luncheon is for welcoming prospective Members to the Edelweiss Garden Club. Please give them a warm greeting and share our aspirations.

Support Gaylord Area Council for the Arts

This year, Edelweiss Garden Club, Inc. is pleased to announce our partnership with Gaylord Area Council of the Arts in supporting their mission *to enhance the quality of life in our community through the arts* since 1972. Member Denise Matteini has been the Liaison with her dual Memberships in both organizations. She has obtained the artists and their exhibits for both our Membership

Luncheon and Garden Walk "Art and Country Gardens". Their artists will be at six gardens selected this year for the Garden Walk during our city's Alpenfest.

Teaming up with



other Non-Profits assures them more visibility in the Community as well as adds an interesting dimension to our Committees and Projects, chance to meet others and glimpse of their organizations. We hope you will look at their website for www.gaca.org for exhibits, workshops, and events.

Planting Day Schedule Wednesday, June 1st

Energy Outlet - 8:15 a.m.

Rock /Information Center - 8:30 a.m.

East and West Courthouse - 8:45 a.m.

McCoy Corner - 9:00 a.m.

Loon I-75 Rest Area - 9:30 a.m.

Friday, June 3rd

Airport - 9:30 a.m. with Roundabout following.

Two Tramps in Mud Time

by Robert Frost, 1934



The sun was warm but the wind
was chill.

You know how it is with an
April day.

When the sun is out and
the wind is still,

You're one month in the middle of
May.

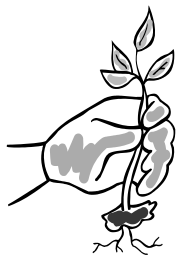
But if you so much
dare to speak,

a cloud comes over the
sunlit arch,

And wind comes off a
frozen peak.

And you're two months back in the
middle of March.

Swap at Spring Plant Exchange



Scheduled for Saturday, June 11th from 9 a.m. until Noon at the downtown Farmer's Pavilion, this Spring Plant Exchange gives Members a chance to rejuvenate their own gardens and share their

knowledge and plants with other Members and the public. Pearl Peurach, has headed this Committee since 2002. This year, Carol Brown, Marlene Everett, Nancy Fussell, Kathy Hughes, Ann Kureth, Georgia Maxwell, Kathy Steel and Margaret Ward are on the Committee.

This publicized event, has our Master Gardener Members on hand to answer questions and help identify plants.

For new and seasoned Members the Guide for the Plant Exchange is in the Yearbook

reminding that labeling is important. Members have come up with a variety of ways to do this: From using waterproof markers on the pots or plastic bags themselves, to making plant labels from popsicle sticks, index cards or mini blinds!

The labels include the name of the plant (if known) and the light requirements such as sun, shade, or partial shade. The plants are set up accordingly for perusing.

Indoor plants are welcome as wellannuals, seeds, tubers, bulbs and lightly used garden tools and ornamentation.

Rosy Moran will be bringing a tent to add curb appeal and protection from the elements! For each plant you bring, you may take a plant.

REASONS WHY WE DIVIDE PERENNIALS

(MSU Master Gardener Manual)

1. Increase vigor.
2. Overcome overcrowding.
3. Over multiplied.
4. Producing fewer flowers.
5. Producing smaller flowers than normal.
6. Have weak stems that fall over easily.
7. Develop a hollow or dead center to the clump.
8. Exhibit sparse foliage.

THREE GOALS WHEN DIVIDING PERENNIALS

1. Rejuvenate the plant so it can continue to perform the way that it was intended.
2. Control the size of the plant.
3. Increase the number of plants.

A NEW LINE OF PUBLICITY

CAR WINDOW STICKERS

Edelweiss Logo Car Stickers are available from Cynthia Hilling, Treasurer for \$4.00. Members can purchase these at cost to advertise our Club as they drive around town and park at our Gardens.

Made of vinyl, they adhere easily to the front window over the dash and peel off instantly. (Note: Side and back tinted windows block the logo from being seen.)



GARDEN FLAGS

Garden Flags were preordered after the April Business Meeting. The flags come in a dark green background with the white Edelweiss logo or reverse with the white background and dark green logo.

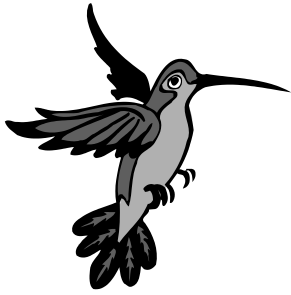
(It was noted rust in the well water may make the white flags turn orange if sprinkler systems are used).

These Edelweiss Flags will be ready for pick up to decorate your Garden at the June 8th Business Meeting or before. The cost is \$10.00. Thank you to Ruth Doss for making the arrangements with Fun Country Embroidery for this silk screening. There will be few extra available.

WEBSITE NEWS

www.edelweissgardenclub.com

Part of the process for Nancy Valuet, Website Coordinator involves designing our pages and continually updating data. If you haven't visited lately, please take a tour of our beautiful sage green and lavender domain. Click your assigned Garden and see multiple pictures of your hard work! Check on upcoming events that mirror your Yearbook. We are very sensitive to personal data, so for our Minutes, Bylaws and Newsletters, the user name and password are necessary to enter "Members Only." They were given out at the April Business Meeting and are in the Minutes.



LIBRARY SHOWCASE

HUMMINGBIRDS

National Garden Week June 5-11, 2011

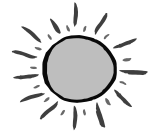
Each year, our Club secures the showcase at Otsego County Library for the month in June to celebrate National Garden Week. The proclamation and the purpose of this Week can be found on www.gardenclubs.org. The Showcase is another way we can educate on our environment, gardening and landscaping.

In a recent Committee Meeting, Ruth Doss (Chair), Carol Breed, Rose Gleason and Rosy Moran decided this year's focus will be on "Hummingbirds." The fascination for hummingbirds transcends people of all ages. Shortly, these small birds will be returning from their winter migration to southern Mexico and Panama. The Committee will set up a display with replicas

of hummingbirds in their habitat..

The Library has fabulous gardening, landscaping, and environmental book selections to get you ready for this season. And, if you want to know more about Hummingbirds ---- check out the Showcase and visit the 'online public access catalog.'

Schedule Summer Activities!



GARDEN WALK

"Art and Country Gardens" July 17th

Tammy Fairchild, Chair and Committee have planning well on its way with information submitted in February to be placed in the Alpenfest Brochure --- The Alpenfest slogan this year is "Something to Tweet About"!

Six distinctive gardens were chosen last fall, to highlight the west side of Gaylord. Our Member, Ann Kureth's gardens will be one of the featured six. A former Art Teacher, her lakeside home illustrates how one can transform a shady, hillside into a work of love and art. Passionate about Moss Gardening, the whole southern slope is 'magnificent moss' with shade loving plants accenting this art form.

The next Newsletter will feature these Gardens in depth. A Sign Up Sheet will be available at the Membership Luncheon for "Hostesses". Shifts are 1-3 p.m., 3-5 p.m. and 5-7 p.m. Each house will include an Artist in the Gardens from *Gaylord Area Council for the Arts* as well as a few of our own!

VIEW MY GARDEN

Wednesdays-check schedule

June, July and August

View My Gardens are a chance to go to other Members homes to see their gardens and stay for lunch!

A social activity to get to know more about fellow Members, ideas for gardening and landscaping or to get advice, this summer favorite will begin mid-June.

The Schedule is in the Yearbook, along with driving directions and what to bring.

This year, Chair, Dee Burau has lined up five gardens, one in the woods and four on four different lakes - Opal, Ranger, Guthrie, and Otsego.

Bring your own sack lunch including something to drink along with a folding lawn chair. View My Gardens start at 11:00 a.m. as do our Summer Business Meetings held at the Energy Outlet Pavilion.

FIELD TRIPS

&

JANET MACUNOVICH SESSIONS

This year Janet Macunovich will be providing 'free' sessions hosted by two area Garden Clubs in District V. Our reservations were made at the March Business Meeting, but there might be a few cancellations of the 15 Members who signed up to attend.

Janet is a favorite when she travels from her home base in the Detroit area where she is lecturer, author, writer and practices what she preaches in her landscaping and gardening business. She writes her weekly free newsletter which any Members can subscribe online at jmaxGarden@aol.com.

Education days will include Tuesday, July 19 *Beyond the Bloom: Adding More Color and Texture to Your Garden*, a hands on format and Wednesday, July 27, *Great Plants and Plant Combinations*. Janet sells her garden and landscape design books at her sessions and online. A Field Trip is being planned to the new Botanic Garden Society of Northwest Michigan in August.

UPCYCLING WASTE

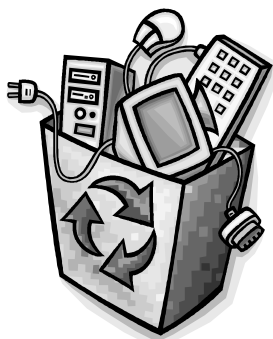
Environment

DEFINITION: UPCYCLING is the practice of taking something that is disposable and transforming it into something of greater use or value.

The term was coined in the 2002 book *Cradle to Cradle: Remaking the Way We Make Things* by William McDonough and Michael Braungart.

Right now, Guardian Gals, Inc. are *Upcycling & Outsmarting Waste* with Terracycle.net. They have partnered with Terra Cycle to

earn funds by outsmarting waste. Upcycling uses waste items like Kashi packages, chip bags and Huggies wrappers to make new products. That organization pays the Gals an average of \$0.02 per item collected. Well over \$1



million has been earned by charities. For a complete list of packages see the Gals website www.guardiangals.org. You may contact them for pick-up! As a Gardener you may be interested in the upcycled

products and the forms in which they return: *Urban flower pots, garbage cans, plastic window boxes, upcycled birdfeeders, fertilizer and plant food bottles, watering cans, garden pavers, plastic picnic tables, fencing, rain barrels, etc.*

United Way Board and Edelweiss Member, Linda Reinhardt has announced their UPCYCLING PROJECT, "RECYLCE YOUR ART WORK." For the first time ever, deliver your framed treasures you no longer want or use between now and May 27th to the United Way Building (115 East Fifth Street) - then shop May 31- June 3rd for a new piece of art. Times are tough just now and Otsego County United Way supports individuals year round.

Clippings.....



Scholarships

Deadline, May 1st

The Committee will meet and review received applications.

Three (\$750) Scholarships are available for High School Seniors or College students in a Horticulture related field.

~

Presentations will be made at the June Business Meeting at the Energy Outlet Pavilion.

~

Annual Membership Dues

by June 1st.

Active Member - \$15

Associate Member - \$25

Life Member - \$15

Check :

Edelweiss Garden Club, Inc.

Mail to: Joan Collick

4541 Island View Drive
Gaylord, Michigan 49735

Soil Testing

is

being

done on

all 9

Garden

Areas this May.

Thank you Roseann Kujawa & Joan Collick

Meet our Members

Sue Hegarty

I grew up in Flint, Michigan where I graduated from the Hurley Medical Center for Nursing in 1965. I worked as a Labor and Delivery Instructor at my Alma Mater for ten years while I was getting a Master's Degree in Education.

In 1977, I took my newly minted Master's degree to San Diego, California where I directed a LVN nursing program for two years.

Also, during that time in California, I met a European chef that lived in the same swinging singles apartment complex as I did. I liked his cooking so well I married him. That was 33 years ago.

We came back to the Midwest in 1979 to continue our respective careers. We ended up teaching in different colleges together. He taught Culinary Arts at Joliet Junior College and I taught Nursing at Prairie State College.

We retired in 2006 and moved to Gaylord (because the fly fishing is so good here, him not me). But, as it turned out, it was the best choice we could have made because the people are so warm and friendly here.

Sue has been a Member of Edelweiss Garden Club since 2008 and has worked on the Energy Outlet Lilac Garden. She is on the Mentoring Committee to work with new Members on orientation.

Denise Matteini

My husband Al and I started building our retirement home in 1992 on Guthrie Lakes in Waters. I loved this area because my Grandfather had a cottage on Otsego Lake. My family started spending summers up here since 1954.

I worked for AAA of Michigan as a Senior Underwriting Clerk for 25 years. I retired in 2001 along with my husband, Al who worked for Ford Motor Company for 37 years. We raised two sons and one daughter in Allen Park. In 2005, we sold that home and moved up to Guthrie Lakes.

I joined a water aerobic class after having a full knee replacement. I am still going 2 1/2 years later. I also enjoy taking watercolor classes at the Gaylord Area Council for the Arts, volunteering at the Historical Society and the United Way Food Pantry. Then, I joined the Garden Club in 2009 which has been so much fun.

My garden is always a work in progress. We will be working on a new area this summer.

Denise works at the Sportsplex Energy Outlet Garden in the back corner Berm Garden. This summer, she has invited us to her home for "View My Garden." She is the Art Chair for both the upcoming Membership Luncheon, "The Art of Gardening" and the "Art and Country Gardens" Garden Walk. She is the liaison to the Gaylord Area Council of the Arts so we can see nature and flowers through artists' eyes.

Kathy Steel

I was born in Detroit. My parents moved to Roseville, Michigan. I attended Sacred Heart Grade and High School. After graduation, I worked for Macomb County Friend of the Court. In 1964, I married my husband, Richard.

During my lifetime, I helped my parents on the truck farm and flowers.

When my mom decided to retire, we took over the flower business. We worked it part time until ten years ago when we moved up north to Elmira to start the green house and flower business here. Our sons became interested in the business so we are giving them the chance to take it over.

I retired from Utica Community Schools where I drove school bus for 17 years.

I now try to help Hank, our youngest son and take care of my grandson, Jesse. If I would have know how much fun it is to be a grandmother, I would have been jealous a long time ago.

Kathy and her husband, Richard own The Blossom Shop Greenhouse and locally grow all of our Edelweiss Garden Club flowers. They will give all of our Members a 10% discount by simply showing your Club name tag.

They invite you to wear pink to their "Breast Cancer Awareness" sale on Mother's Day Weekend. They have a special perennial called the "Hope Echinacea" propagated especially for Breast Cancer.

Kathy had been a Member of the Garden Club since 2003.

Native Plants Girl Scout Badge

“Nurture the Earth - Plant Natives” is the byline for the National Garden Clubs, Inc. Girl Scout patch in a kicky hot pink, dark and lime green badge developed in 2009. This Badge was brought to the attention of a local Troop when they contacted Edelweiss Garden Club, Inc. about working on their “Earth Day” Badge and in case, they would like to pursue this one in their future.

At the March Business Meeting, a discussion took place about the need for help at the Otsego County District Conservation 16 acres of gardens and newly built native plant greenhouse. It was felt that their children’s program would better fit their needs for the Earth Day Badge.



However, to earn the Native Plants Patch girls can:

Discover native plants.

Girls will learn what plants are native to their area and how to preserve and protect those native plants as well as what invasive species are in their area.

Girls will learn about resources and partnerships offered by their local National Garden Clubs.

Connect by working with their local National Garden Club members who will serve as a project sponsor. In addition, girls are encouraged to make contact with native plant societies, horticultural professionals, and county extension services to help in completing project requirements.

Take Action by doing the following:

*Interviewing someone about native plants in their area.

*Establishing a native beauty spot in a public garden, school, church, park, town or community.

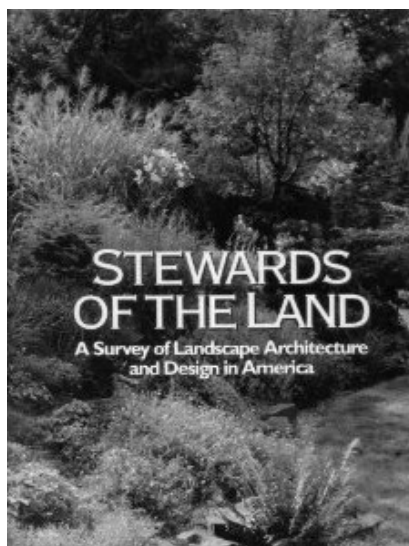
*Spreading the word about native plants by sharing information learned with other troops and community groups, newspaper articles, radio and TV spots, or posters, fliers, and booklets.

The Badges are \$1.75 and can be purchased through the National Garden Clubs, Inc. Headquarters.



New Landscaping Design School in District

District V is launching the first of a series of four Courses in Landscape Design this fall. Our own Mason County Garden Club of the Ludington area has announced their hosting of Course I to be held on **Thursday and Friday, September 8th and 9th.** A complete brochure and application may



be found on the Michigan Garden Clubs, Inc. website. This answers the questions about requirements which includes reading chapters from the National Garden Clubs, Inc. authored book *Stewards of the Land: A Survey of Landscape Architecture and Design in America*. Some of the Course I topics are: Landscape Design and Resources, The Private Garden, Basics of a Site

Plan, Space, Design and People, Role of Native Plants, and Public Lands and Development.

We are extremely fortunate to have this NGC, Inc. Landscaping Design School in our area. In the recent *Spring 2011 - The National Gardener*, the only other spots in the country making these offerings are Course I in Seattle, Washington and Auburn, Alabama, Course II in Morgantown, West Virginia and Course III in Warrenville, Illinois.

The book will be available to look through at the June Business Meeting.

Edelweiss Garden Club, Inc.

YEAR IN REVIEW

APRIL 1, 2010 - MARCH 31, 2011



68 Total Members

57 Active Members

11 Life Members

7 New Members in Past Year

Fundraisers

Greens Sale (Poinsettias-New)

Garden Walk "Country Scapes and Gardens"

Atlas Garden Gloves

Awards (to receive 2010 Awards this May)

Gold Club of Distinction (2009)

Yearbook (2009) - Honorable Mention

Publicity (2009) - District V (tied for 1st)

State of Michigan (2nd)

NGC "Golden Days" Award Certificate for
Daffodil Bulb Planting

Beautification of Gaylord - Summer

Chamber of Commerce

Courthouse/East

Courthouse/West

Energy Outlet - Sportsplex Park

Gaylord Regional Airport

Loon Lake I-75 Rest Area

McCoy Corner Welcome Sign

Pontresina Rock

University Center Roundabout

Beautification of Gaylord - Winter

"Deck the Halls" - Friendship Shelter, Inc.

January and February Floral Arrangements

(Otsego Library and US Post Office)

Membership Luncheon (May Pole Theme) at

Marsb Ridge Resort

Planting Day with Reception at the Gaylord Regional Airport

Speakers - May - Dr. Norman Lownds

(MSU Children's Garden)

June - Mary Agria

(Author - Time in a Garden)

September - Jim Lappan, Inc

Garden Forum - Landscaping)

October - Botanical Garden Society of North

West Michigan - Karen Schmidt

January - Morgan Composting

Dairy Doo (Brad Morgan)

February - Rain Barrels (Lynn Timmer)

(Otsego Conservation District Presentation)

March - New 2011 Greenhouse Arrivals

(Kathy Steel)

Michigan Garden Clubs, Inc. State Convention - Battle Creek
(1 attendee)

Michigan Garden Clubs, Inc. District V Spring Meeting in
Ludington (7 Attendees)

Michigan Garden Clubs, Inc. District V Fall Meeting in
Traverse City (8 Attendees)

Michigan Garden Clubs, Inc. District V Presidents' Meeting -
President and First VP- Glen Lake Garden Club

Field Trips: Elk Rapids Community Gardens

Pond Hill Farm - Harbor Springs

Rusty's Dahlia Farm - East Jordan

Potluck and Barbeque at Waters RV- Hosts Ed and Ruth
Doss

Habitat for Humanity House Landscaped - November Dedi-
cation- House #16

11 Members received Otsego Wildlife Legacy (OWLS) free
tree packages to plant

Library Showcase: "Enjoy the Fruits of Harvest
of Northern Michigan"

View My Gardens/Progressive View My Gar-
den/ 3 Facilitation Group Meetings

2011 Yearbooks, Day Runners/Paperbacks
Theme: Art of Gardening

Six Newsletters

Hospitality - Greeters at Meetings, Monthly Table
Decorations, Thought for the Day

Birthday cards to Members

150 Irises donated by Jim Pagels, Attorney

Chamber Service Sign - Edelweiss Garden Club
logo purchased and added

Edelweiss Garden Club Car Stickers available

"Wear Name Tags" or be fined for good cause

Christmas Luncheon (Marsb Ridge) - Alpine
Bells Entertainment and Ornament Exchange

Chamber of Commerce Member (3rd year)

Two \$750 Scholarships to Vanderbilt High
School Senior and Olivet College Junior

\$100 to Botanical Garden Society of North
West Michigan

Spring and Fall Plant Exchanges

Memorial Books to Library for Sue Rea, Mag
Liebold, and Annette Voorhis



Spring Into Summer

May and June 2011 Calendar

May 2011

- May 3 - **“Pause for a Cause” Edelweiss Garden Club, Inc.**
8:30 a.m. Isabella’s Copper Pot, Gaylord.
- May 3&4 - **Environmental Study School, Course III, Sturgis.**
- May 9 - **District V Presidents’ Meeting, Cadillac Grill (Eldorado), Cadillac**
Hosted by: **Ma-Me-Ne-Sewong Garden Club**
- May 10 - **Michigan Garden Clubs, Inc. Spring District V Meeting, Tustin.**
“Secret Garden Secrets” (Reservations were due by April 16.)
- May 11 - **Edelweiss Garden Club, Inc. Membership Luncheon,**
Michaywe Inn the Woods Terrace Room
“The Art of Gardening” *partnering with Gaylord Area Council of the Arts*
11:00 a.m. Cocktails and Art Exhibit, Luncheon at Noon.
Reservations by May 5th. Annual Membership Drive. Speaker: Carlene LaGrou
- May 27-30 - **National Garden Clubs, Inc. 82nd Convention, “A Capitol Congress”, Wash-**
ington, D.C.

June 2011


- June 1 - **Membership Dues deadline.**
- June 1 - **Planting Day and Opal Lake Beach House After Party/Picnic**
(See Potluck directions, Page 1 and Planting Schedule, Page 2)
- June1-30 - **Library Showcase Begins** *for National Garden Week*
- June 5-11 - **National Garden Clubs, Inc. National Garden Week**
- June 8 - **Business Meeting and Art in the Park** 11:00 a.m. Noon: Sack Lunch
Program: Scholarship Presentation
- June 9-11 - **Michigan Garden Clubs State Convention, Midland, Michigan, H Hotel.**
“Growing Gardens - Creating Communities” Keynote Speaker: Mike Nowak
Chicago WCPT 820 AM. Reservations by May 12th.
- June 11 - **Spring Plant Exchange** East Courthouse Lawn *by the Farmer’s market* . 9-Noon
- June 22 - **View My Garden** Sue Symkowiak’s Home
11:00 a.m. Lunch: Noon
- June 29 - **View My Garden** Lois Kalis’ Home
11:00 a.m. Lunch: Noon

*“But for one’s health you say, it is very necessary to work in the garden
and see the flowers growing.*

A quote from Vincent Van Gogh

For more details on above dates:

National Garden Clubs, Inc. - www.gardenclubs.org
Michigan Garden Clubs, Inc. - www.michigangardenclubs.org
Edelweiss Garden Club, Inc. - www.edelweissgardenclub.com





MEMBER OF MICHIGAN GARDEN CLUBS, INC., CENTRAL REGION AND NATIONAL GARDEN CLUBS, INC.

Edelweiss Garden Club, Inc. Board

Marilyn McIntosh, President/Editor

Joan Collick, 1st Vice President (Membership)

Roseann Kujawa, 2nd Vice President (Programs)

Marge Williamson, 2nd Vice President (Programs)

Pam Karbowsky, Secretary

Cynthia Hilling, Treasurer

Rosy Moran, Corresponding Secretary

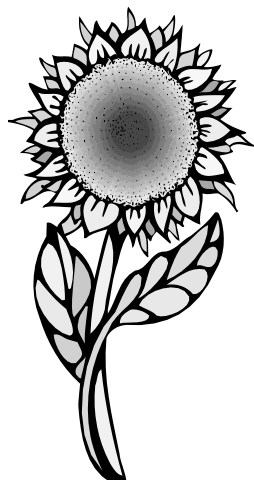
Ruth Doss, Director

Lois Kalis, Director

Nancy Valuet, Director/Website Coordinator

~

www.edelweissgardenclub.com



Coming in the July - August 2011 Newsletter

Garden Walk

Scholarship Recipients

Wrap Up of Spring Events

Michigan Garden Clubs,
Inc. 2010 State Convention

Spring District V and
Presidents' Meetings

2011 Herb of the Year - Horseradish

The practice was started by the International Herb Society in 1994 to name the Herb of the Year, to advance the knowledge of herbs in uses and related businesses, and provide publicity for their organization. This year Horseradish made the honor.....plan ahead for 2012 Rose, 2013 Elderberry, 2014 Artemisia and 2015 Savory.

Good news for our northern area, Horseradish made the list, as it is easily grown in Zones 2-9. A first frost will disintegrate the leafy foliage.

The New York Times article: *IN THE GARDEN Growing Your Own Horseradish* offers insights



to peak your interest: *Armoracia rusticana*, (it's Latin name) is part of the Brassica family which includes turnips, kale, mustard greens, broccoli, daikon radish and many other plants with varying degrees of pungency. It is an ancient herb, native to the temperate regions of Europe and Asia. It has been used for centuries as the bitter herb in the Passover Seder.

Easy to grow and a potassium lover, this element can be added with fireplace ashes. There is an old saying, the article remarks, that 'once you plant, you can never move it', as shoots will be difficult to remove from

the soil. Some gardeners use this handsome leaved plant as a border in their gardens.

Undisturbed, there is no strong odor. It is thought to be this plant's protection mechanism when ground which produces the burning sensation. Grind with a food processor outdoors only.

Collinsville, Illinois, claims the title of the Horseradish Capital where 60% of the world's horseradish is grown. Southern Illinois accounts for growing 80-85%. Fittingly, a thesis was done by a University of Illinois professor on the anti-cancer properties, isothiocyanates, One tablespoon at a meal can give you a little anti-cancer boost. The best time to dig is in the fall, grind and add vinegar right away before it turns a nasty brown.